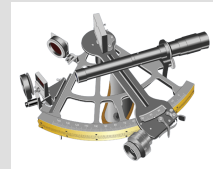


# MARINE EDUCATIONAL EVALUATIONS



## INTRODUCTION

This module offers you 14 different multimedia-based educational evaluations. You can review contents, evaluate and test your knowledge. In some tests levels of difficulty can be selected. Further, the educational evaluations provide status reports. They show you all correct/in-correct answers, beside the exact runtime and other information on your learning process.



### *Avoid the danger*

You have 24 tasks/dangers (cardinal marks, IALA system A and B lateral marks, other marks and vessels). Move the throttle full ahead. While you navigate, you will face the dangers.



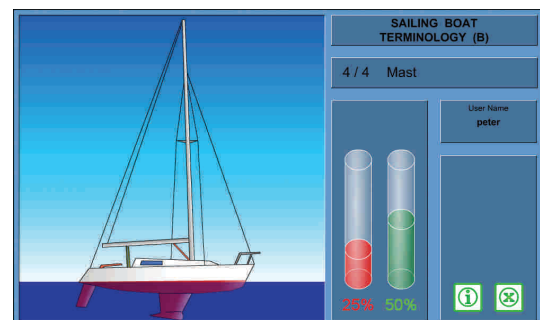
### *Place the lights*

You will see masterhead lights, sidelights and all-round lights, green, red or white lights. Your task is to Drag and Drop the corresponding lights into the proper positions according to the situation described in the text.



### *lala marks evaluation*

You have 31 tasks to solve in IALA system A. From cardinal to lateral marks and from special and isolated danger to safe water marks. Identify by clicking on the correct answer.



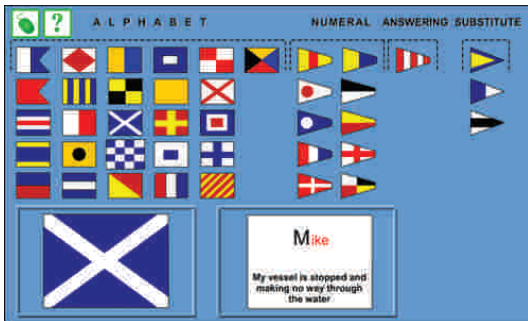
### *Sailing boat terminology (B)*

Your task is to locate the component named in the text box on the right side of the screen by clicking on it. As you respond, the green or red cylinder will show your results.

## MODULES

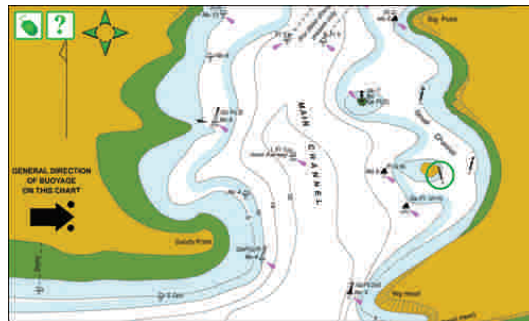
- Avoid the danger (Sailing)
- Avoid the danger (Ships)
- Chart symbols
- IALA marks evaluation
- IALA marks trainer
- International Morse Code test
- International Morse Code trainer

- International signal flags evaluation
- International signal flags trainer
- Liferaft equipment trainer
- Lights and shapes
- Name the picture
- Place the lights
- Sailing boat terminology (B)



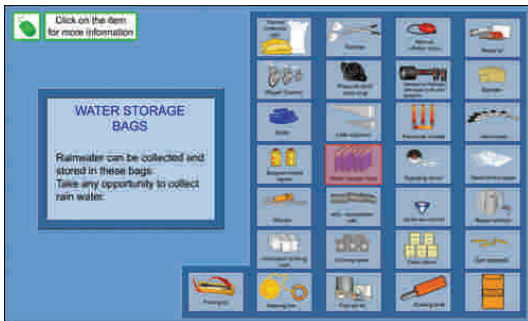
*International signal flags trainer*

All the international signal flags from "I require a pilot" to "I have a diver down" and from "I require medical assistance" to "Man overboard" are displayed.



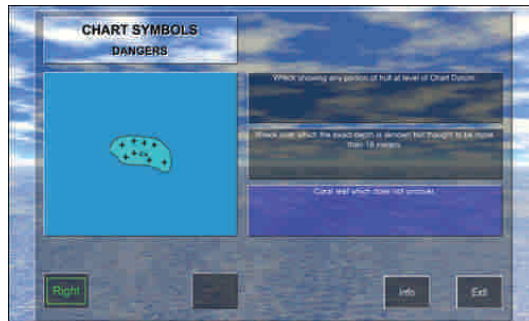
*lala marks trainer*

Review the navigational marks (top mark, colour, shape, rhythm) from cardinal marks to lateral marks and from special and isolated danger to safe water marks.



*Liferaft equipment*

Review a SOLAS "A" equipment pack that you can find inside an ocean going raft. From parachute rockets and buoyant smoke signals to a sea anchor and a radar reflector.



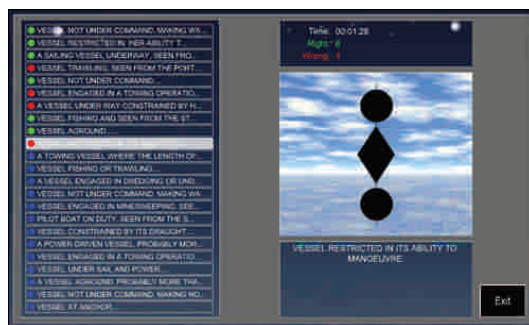
*Chart symbols*

Here you see rocks, reefs, dangerous wrecks, prohibited areas, submarine pipelines and remains of a wreck - all as chart symbols. Identify the symbols by clicking on the correct name.



*Name the picture*

In this exercise you see various nautical pictures - from sextant to echo sounder and from anemometer display to fisherman's anchor.



*Lights and shapes*

At daytime you will see vessels showing different shapes, such as black cylinder, diamond or ball. At night you will see different light combinations showed by vessels.

## MINIMUM SYSTEM REQUIREMENTS

- 400 MHz Pentium II
- 64 MB RAM
- 150 MB free hard disc space
- 1024x768 available screen resolution
- 56 Kbps network connection (recommended ISDN)

- Explorer 4.0/Netscape 4.7 or above (do not use Netscape 6)
- Flash Player 6 (Flash Plugin), free download: [www.macromedia.com](http://www.macromedia.com)