

# ENGINE CONDITION TREND MONITORING

## Pratt & Whitney ECTM system V<sup>®</sup> Multimedia Based Training

### CONTENT

The system was developed as a full Internet/Intranet Application for distance learning and it provides a high quality web-based training package for the Pratt & Whitney ECTM System V.

The courseware is designed to increase the retention of subject matter through visual realism and practical instructions.

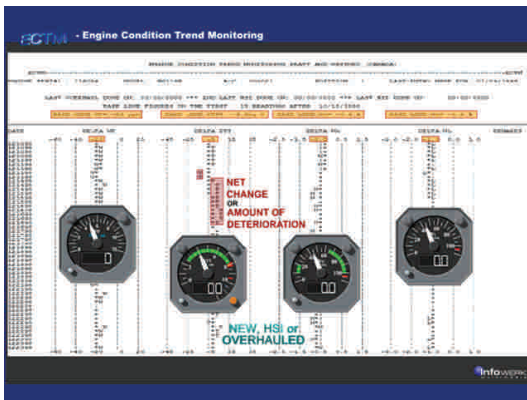
### IMPLEMENTED STANDARDS

AICC	ATA SPEC 104
------	--------------

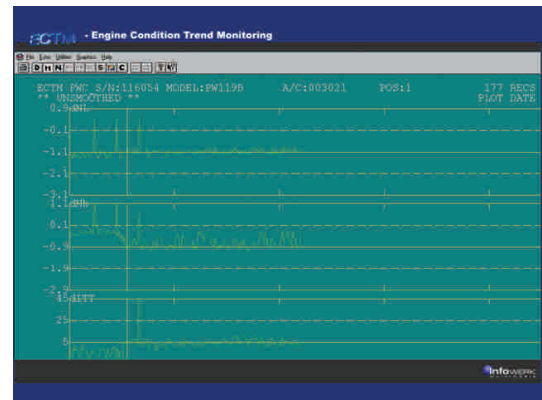
See reverse side for detailed information.

### WHO SHOULD ATTEND THE TRAINING

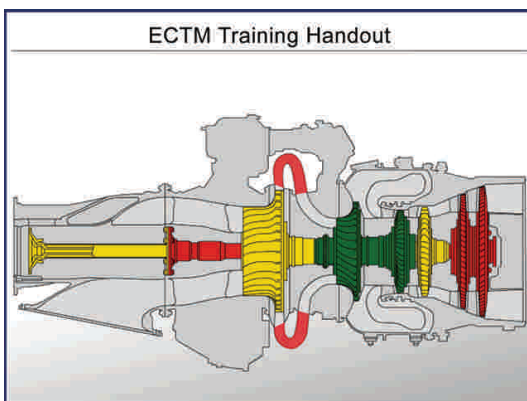
- Operations Engineering
- Maintenance Personnel



Example of an ECTM Baseline



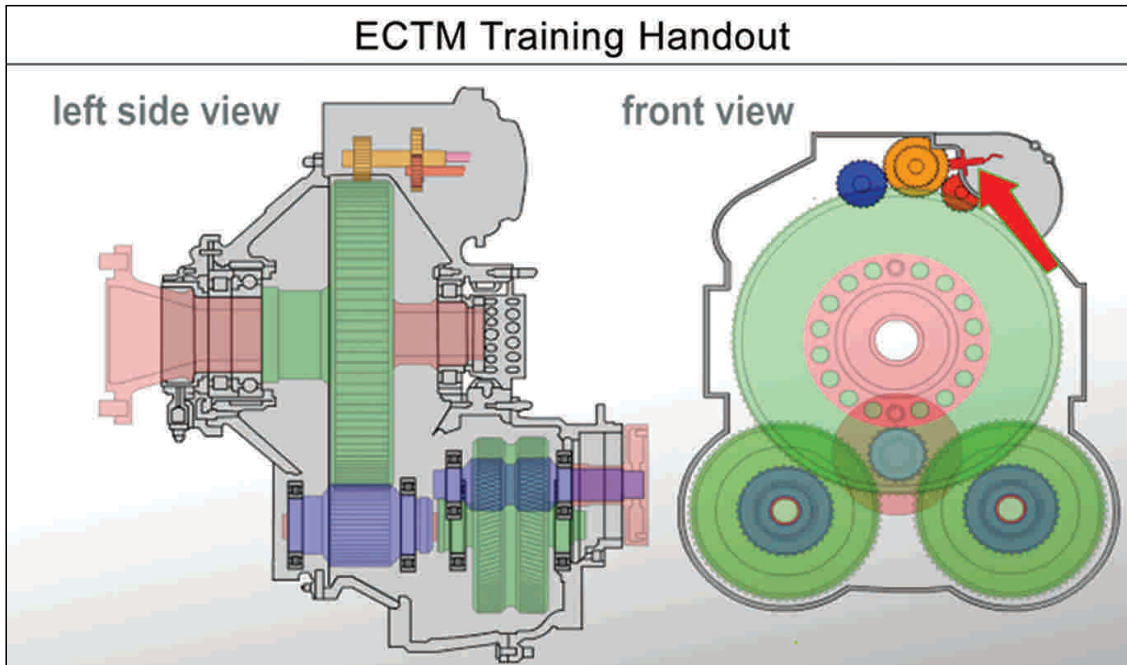
Graphic Viewing Mode



Engine Compressor and Power Module

### APPLICATION

Simulation and multimedia content can be used either as an aid to instructors for classroom training or for standalone training via the Inter- or Intranet. On the Inter-/Intranet version, the system logs all activities of the trainee and a full course report is available at any time during the training. The courseware allows the trainee as well as the trainer to communicate via an integrated e-mail system. All communications will be recorded. The system has the flexibility to be tailored for different trainees or groups, or it can be tailored to different course subjects. It is designed for use as a just-in-time training tool.



Reduction Gear Box - Spurgears

**AICC (Aviation Industry CBT Commitee)**

The AICC is an open forum of training professionals who develop guidelines for interoperable learning technology, to create the standard to provide interoperability between training content and enterprise online learning management systems.

The standard defines the tracking of data exchanged between management systems and interactive lessons.

It also defines an interchange format for course

structures so entire courses can be exchanged among management systems made by different vendors.

**ATA SPECIFICATION 104**

This specification establishes guidelines for the presentation of certain data produced by aircraft-, engine- and component manufacturers, which is required for support of their respective products.

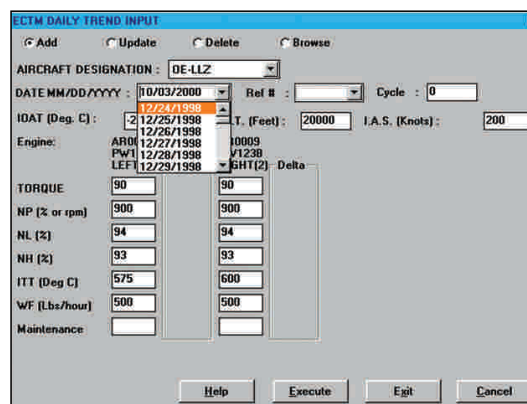
The guidelines are intended as a basic requirement for hardware, software, and function of computer based learning materials for technical training.

**COURSE DURATION**

The initial training takes:  
approximately 4 hours

**SYSTEM REQUIREMENTS**

- 400 Mhz Pentium II Processor
- 64 MB RAM
- 300 MB free hard disc space
- 1024x768 screen resolution
- Explorer 4.0/Netscape 4.0 or above
- 56 Kbps network connection



Graphic Viewing Mode